

JY-TECK G-TYPE RATIO METER SERIES

FEATURES:

- * DIN SIZE 24x48mm, MINI HOUSING, EASY ASSEMBLY OR MAINTENANCE.
- * AUTOMATIC IN-PUT SIGNAL POLARITY INDICATION.
- * BRIGHT LED DISPLAY FOR OBVIOUS READING.
- * BUILD-IN QUARTZ TIME-BASW CIRCUIT.
- * LSI I.C. FOR STEADY INDICATION AND ACCURACY.
- * DISPLAY “-250.0” OR “-250.00” READING WITH BROKEN LINE INDICATION OF SIGNAL.
- * EXTERNAL ADJUSTABLE ZERO / SPAN ON FRONT PANEL.



APPLICATIONS:

- * FLOW METER.
- * LEVEL METER.
- * INSTRUMENTS.
- * THERMAL METER.
- * PRESSURE METER.

GENERAL SPECIFICATIONS:

SAMPLING RATE	3 TIMES / SECOND (G153-SERIES).
TIME BASE	40 KHz (G153-SERIES).
ACCURACY	≤0.05% ± 1 Digit..
SIGNAL-OPEN INDICATION	“-250.0” (G153-SERIES).
DISPLAY	0.36" HIGH RED LED DISPLAY.
POWER SOURCE	DC + 4.75~ + 5.25V/150mA.
POWER CONSUMPTION	≤0.75 WATT.
OPERATING TEMPERATURE	0~50 °C.
OPERATING HUMIDITY	0~85 %.

SPECIFICATIONS:

PART NO.	DIGIT	IN-PUT SIGNAL	DISPLAY	RESOLUTION	IN-PUT IMPEDANCE	CLOCK O/P
G153A10E	3.5 DIGIT	4.0-20.0 mA/DC	0.1-100.0%	0.1%	≅ 6.25 ohm	40 KHz
G153CUSE	“ ”	“ ”	OPTIONAL BY CUSTOMER	-----	-----	“ ”

TERMINAL DEFINITIONS:

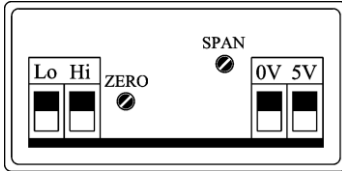
PIN NO.	NAME	DESCRIPTIONS
1	+5V	DC POWER POSITIVE IN-PUT.
2	GND	DC POWER GROUND IN-PUT.
8	CLOCK	INTERNAL CLOCK OUT-PUT (SEE GENERAL SPEC IF ICATIONS) .
9	L.T.	THE DISPLAY WILL SHOW “-1888” IF CONNECTED +5V (G113-SERIES).
10	IN-Hi	POSITIVE CURRENT SIGNAL IN-PUT.
11	IN-Lo	NEGATIVE CURRENT SIGNAL IN-PUT.

- * IMPORTANT : SIGNAL GROUND AND DC POWER GROUND MUST BE ISOLATED ABSOLUTELY.

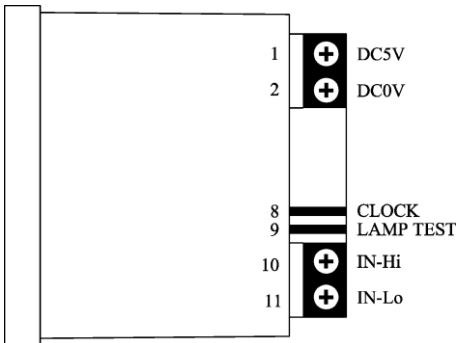
APPEARANCE:



SPAN /ZERO ADJUST (BACK VIEW):

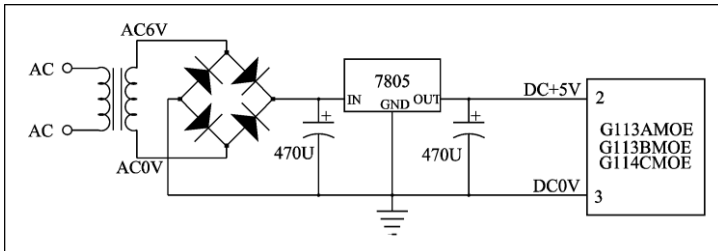


TERMINAL & WIRING (TOP VIEW):



APPLICATION CIRCUIT:

1. POWER SUPPLY CIRCUIT:



DIMENSIONS & PANEL CUT-OUT AREA (Unit: m/m.):

