

JY-TECK G-TYPE DC VOLTAGE METER SERIES

FEATURES:

- * DIN SIZE 24x48mm., EASY TO ASSEMBLY OR MAINTENANCE.
- * STABLE ZERO READING WITH ZERO SIGNAL IN-PUT.
- * AUTOMATIC INDICATE IN-PUT SIGNAL POLARITY .
- * BRIGHT LED DISPLAY FOR OBVIOUS READING.
- * BUILD-IN QUARTZ TIME-BASE CIRCUIT.
- * LSI I.C. FOR STEADY INDICATION AND ACCURACY.
- * DECIMAL POINT SELECTABLE ON FRONT PANEL.



APPLICATIONS:

- * TACHO METER.
- * THERMAL METER.
- * VOLTAGE METER.
- * RATIO METER.
- * CURRENT METER.
- * ELECTRONIC INSTRUMENT.

GENERAL SPECIFICATIONS:

SAMPLING RATE	3 TIMES / SECOND (G113-SERIES).
TIME BASE	40 KHz (G113-SERIES).
ACCURACY	$\leq 0.025\% \pm 1$ Digit..
INPUT IMPEDANCE	≥ 1.0 Mega ohm.
OVER-RANGE INDICATION	"1" OR "-1" SHOWING ON THE LEFT MOST DIGIT AND OTHER DIGITS ARE BLANK(G113-SERIES).
DISPLAY	0.36" HIGH RED LED DISPLAY.
POWER SOURCE	DC + 4.75~ + 5.25V/120mV.
POWER CONSUMPTION	≤ 0.6 WATT.
OPERATING TEMPERATURE	0~50 °C.
OPERATING HUMIDITY	0~85 %.

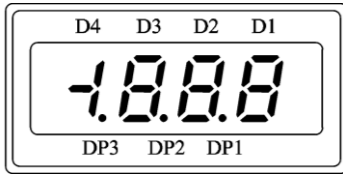
SPECIFICATIONS:

PART NO.	DIGIT	RANGE	RESOLUTION	CLOCK O/P
G113AM0E	3.5 Digit	$\pm 0.1\sim 199.9$ mV/DC	0.1 mV/DC	40 KHZ
G113BM0E	"	$\pm 0.001\sim 1.999$ V/DC	0.001 V/DC	40 KHZ

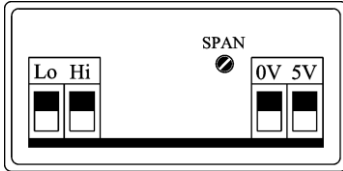
TERMINAL DEFINITIONS:

PIN NO	NAME	DESCRIPTIONS
1	+5V	DC POWER POSITIVE IN-PUT.
2	GND	DC POWER GROUND IN-PUT.
3	D.S	DECIMAL POINT SELECT.
4	DP4	* SELECT DIFFERENT DECIMAL POINT BY CONNECTING ONE OF DP1~DP4 TO D.S.
5	DP3	* DP4 IS NULL IN G113-SERIES.
6	DP2	
7	DP1	
8	CLOCK	INTERNAL CLOCK OUT-PUT (SEE SPECIFICATIONS).
9	L.T.	THE DISPLAY WILL SHOW "1888" IF CONNECTED +5V (G113-SERIES).
10	IN-Hi	
11	IN-Lo	CONNECT TO SIGNAL IN-PUT SOURCE.

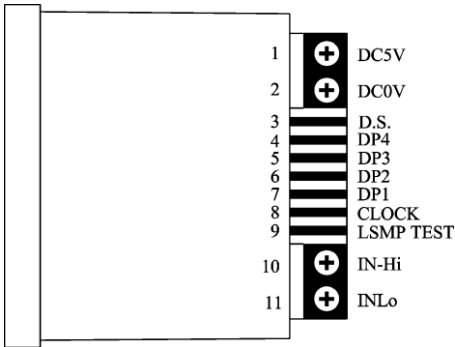
APPEARANCE:



SPAN ADJUST (BACK VIEW):

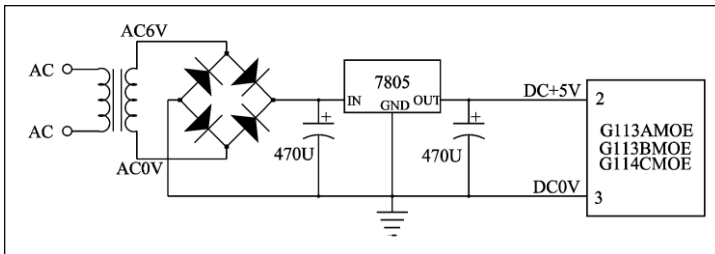


TERMINAL & WIRING (TOP VIEW):

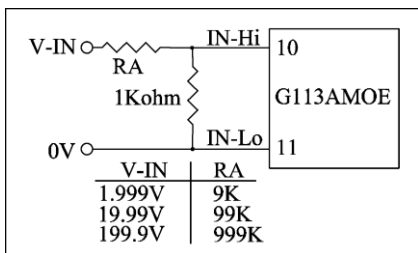


APPLICATION CIRCUIT:

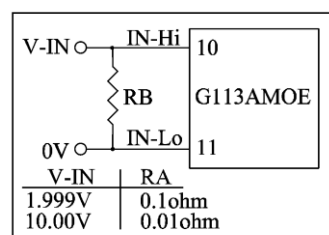
1. POWER SUPPLY CIRCUIT:



2. DC VOLTAGE CIRCUIT:



3. DC CURRENT CIRCUIT:



DIMENSIONS & PANEL CUT-OUT AREA (Unit: m/m.):

